



Nissan Intelligent Mobility moves you one step ahead. In cars that feel like an extension of you, helping you see more and sense more, reacting with you, and sometimes even for you. Nissan Intelligent Mobility is about a better future – moving through life with greater confidence, excitement and connection to the world around you.



ARIYA®  
2023



<sup>9</sup>Availability may vary. NissanConnect® Services subscription may be required. Always read and follow instructions for safe update procedures. You may contact Nissan at 1-800-333-0207 for assistance with software updates. You may also visit your local Nissan dealer; dealership charges may apply. <sup>10</sup>Available feature. <sup>11</sup>Driving is serious business and requires your full attention. If you have to use the connected device while driving, exercise extreme caution at all times so full attention may be given to vehicle operation. <sup>12</sup>Use only when parked in a safe location. Compatible device required. Message and data rates may apply. <sup>13</sup>Charging capacity and times may vary based on battery temperature. For Level 1 home charging, use only a 110-120 volt, 15-amp dedicated outlet for charging. See Customer Disclosure Form for details. <sup>14</sup>240-V home charging dock sold separately. Not a Nissan product. Some chargers may not be compatible with your ARIYA. Contact charger manufacturer before purchase for information on compatibility and warranty. Nissan does not warrant and is not responsible for loss, including consequential, incidental, or other damages caused by charger defects, charger incompatibility, or installation services. <sup>15</sup>2023 MY EPA-estimated range up to 304 miles for combined city/highway driving for VENTURE+ FWD. 2023 MY EPA-estimated range up to 289 miles for combined city/highway driving for EVOLVE+ FWD, and EMPOWER+ FWD. 2023 MY EPA-estimated range up to 216 miles for combined city/highway driving for ENGAGE FWD. 2023 MY EPA Fuel Economy Estimates 111 City, 95 Highway for VENTURE+ FWD. Based on EPA formula of 33.7 kW/hour equal to one gallon of gasoline energy, EPA rated VENTURE+ FWD equivalent to 111 MPG measured as gasoline fuel efficiency in city driving, and 95 MPG in highway driving. 2023 MY EPA Fuel Economy Estimates 105 City, 91 Highway for EVOLVE+ FWD, and EMPOWER+ FWD. Based on EPA formula of 33.7 kW/hour equal to one gallon of gasoline energy, EPA rated EVOLVE+ FWD, and EMPOWER+ FWD equivalent to 105 MPG measured as gasoline fuel efficiency in city driving, and 91 MPG in highway driving. 2023 MY EPA Fuel Economy Estimates 109 City, 94 Highway for ENGAGE FWD. Based on EPA formula of 33.7 kW/hour equal to one gallon of gasoline energy, EPA rated ENGAGE FWD equivalent to 109 MPG measured as gasoline fuel efficiency in city driving, and 94 MPG in highway driving. Actual mileage will vary with trim levels, options, and driving conditions. See Customer Disclosure Form for details. Use for comparison only. <sup>16</sup>Public charging networks are provided by independent companies, and are not within Nissan's control. Availability of charging stations not guaranteed. <sup>17</sup>SiriusXM with 360L: Certain features and/or content may not be available unless an active data connection is enabled in the vehicle. Content varies by SiriusXM subscription package. <sup>18</sup>Leather appointments. <sup>19</sup>Extra cost option. <sup>20</sup>For complete information concerning warranty coverage, conditions, limitations, and exclusions, see your Nissan dealer and [parts.NissanUSA.com](https://www.nissanusa.com) for warranty details. <sup>21</sup>All non-Nissan Genuine Accessories are not warranted by Nissan. Refer to accessory product manufacturer for warranty details. Nissan limited warranty also does not cover damages or failures to the vehicle caused by improper installation or alterations. Damage or failures caused by use of non-Nissan-affiliated parts/accessories are also excluded from Nissan warranty coverage. Read the new vehicle limited warranty information booklet or contact your dealer for details. <sup>22</sup>Compatible smartphone required. Virtual Key to be used only in accordance with laws or rules in effect in your vehicle's location. Actual maximum distance for operation will vary depending on obstructions between compatible device and vehicle. <sup>23</sup>Federal/state/local laws or rules may apply. Review before using. <sup>24</sup>Vehicle shown is for illustrative purposes only. Not representative of brochure's model year / model. <sup>25</sup>Cargo shown for display purposes only. Cargo and load capacity limited by weight and distribution. Always secure cargo. Heavy loading of the vehicle with cargo, especially on the roof, will affect the handling and stability of the vehicle. <sup>26</sup>Towing varies by configuration. See Nissan Towing Guide and Owner's Manual for additional information. Always secure cargo. <sup>27</sup>Preliminary Nissan-estimated combined city/highway driving range up to 205 miles for ENGAGE e-4ORCE AWD, 270 miles for ENGAGE+ e-4ORCE AWD and EVOLVE+ e-4ORCE AWD, 265 miles for PLATINUM+ e-4ORCE AWD with 19" wheels, and 240 miles for PLATINUM+ e-4ORCE AWD with 20" wheels. Based on Nissan internal testing results, subject to EPA confirmation. Actual mileage will vary with trim levels, options, and driving conditions. Use for comparison only. <sup>28</sup>Nissan calculation using 1-ft rollout testing with long-range battery and e-4ORCE only in Sport Mode and with e-Step off. Actual acceleration may vary. These results are for comparison only and should not be attempted on public roads. <sup>29</sup>ProPILOT Assist and ProPILOT Assist with Nav-link can't prevent collisions. Driver at all times responsible to maintain safety by monitoring traffic, controlling vehicle, and if needed steer, brake or accelerate. System works only when lane markings detected and does not function in all weather, traffic and road conditions. See Owner's Manual for safety information. <sup>30</sup>Nissan Safety Shield technologies can't prevent all collisions or warn in all situations. See Owner's Manual for important safety information. <sup>31</sup>Do not use for extended periods of time. See Owner's Manual for important safety information. <sup>32</sup>Intelligent Around View® Monitor cannot eliminate blind spots and may not detect every object. Driver should always turn and check surroundings before driving. See Owner's Manual for safety information. <sup>33</sup>Intelligent Rear View Mirror may not detect every object and does not eliminate blind spots or warn of moving objects. See Owner's Manual for safety information. <sup>34</sup>e-Step does not bring the vehicle to a complete stop. Monitor traffic conditions and use conventional brake as needed. See Owner's Manual for safety information. <sup>35</sup>Brake Assist cannot prevent all collisions and may not provide warning or braking in all conditions. Driver should monitor traffic conditions and brake as needed to prevent collisions. See Owner's Manual for safety information. <sup>36</sup>Intelligent Cruise Control uses limited braking and is not a collision avoidance or warning system. Driver should monitor traffic conditions and brake as needed to prevent collisions. See Owner's Manual for safety information. <sup>37</sup>Intelligent Forward Collision Warning cannot prevent collisions. See Owner's Manual for safety information. <sup>38</sup>Automatic Emergency Braking with Pedestrian Detection cannot prevent all collisions and may not provide warning or braking in all conditions. Driver should monitor traffic conditions and brake as needed to prevent collisions. See Owner's Manual for safety information. <sup>39</sup>Intelligent Lane Intervention only operates when lane markings are detectable. See Owner's Manual for safety information. <sup>40</sup>Intelligent Blind Spot Intervention cannot prevent all collisions and may not detect every object or warn in all situations. Driver should always turn and look before changing lanes. See Owner's Manual for safety information. <sup>41</sup>Rear Cross Traffic Alert may not detect all vehicles. See Owner's Manual for safety information. <sup>42</sup>Rear Automatic Braking cannot prevent all collisions and may not provide warning or braking in all conditions. Driver should always turn and check surroundings before driving and brake as needed to prevent collisions. See Owner's Manual for safety information. <sup>43</sup>Sonar System may not detect every object. Driver should always check surroundings before driving. See Owner's Manual for safety information. <sup>44</sup>Intelligent Driver Alertness cannot provide a warning in every situation. See Owner's Manual for safety information. <sup>45</sup>Traffic Sign Recognition may not detect and read all traffic signs in all conditions. Driver should monitor all traffic signs and obey all traffic laws. See Owner's Manual for details. <sup>46</sup>Vehicle Dynamic Control cannot prevent collisions due to abrupt steering, carelessness, or dangerous driving techniques. It should remain on when driving, except when freeing the vehicle from mud or snow. See Owner's Manual for safety information. <sup>47</sup>Compatible device and service required. Cloud-based service provided by Amazon Alexa Automotive services. Subject to third party service availability. Amazon, Alexa and all related logos are trademarks of Amazon.com, Inc. or its affiliates. For more information, see [NissanUSA.com/connect/legal](https://www.nissanusa.com/connect/legal). <sup>48</sup>Air bags are only a supplemental restraint system. Always wear your seat belt. Rear-facing child restraints should not be placed in the front-passenger's seat. All children 12 and under should ride in the rear seat properly secured in child restraints, booster seats, or seat belts according to their size. Air bags will only inflate in certain accidents. See Owner's Manual for safety information. <sup>49</sup>Up to 1,500 lbs. maximum towing for 2023 ARIYA. Towing varies by configuration. See Nissan Towing Guide and Owner's Manual for additional information. Cargo and load capacity limited by weight and distribution. Always secure cargo. <sup>50</sup>Roadside assistance coverage period varies by model-year model. For complete information concerning warranty coverage, conditions and exclusions, see your Nissan dealer and read the warranty information booklet for the model-year model. ©2022 Amazon.com, Inc. or its affiliates: Amazon, Alexa, Echo, and all related marks are trademarks of Amazon.com, Inc. or its affiliates. Certain Alexa functionality is dependent on smart home technology. Apple CarPlay® and Apple Watch® are registered trademarks of Apple, Inc. Bose® is a registered trademark of The Bose Corporation. Facebook® is a registered trademark of Facebook, Inc. Google, Android, Google Play, Android Auto and other marks are trademarks of Google LLC. Google Assistant is not available in certain languages and countries. To use Android Auto on your car display, you'll need an Android phone running Android 6 or higher, an active data plan, and the Android Auto app. HomeLink® is a registered trademark of Gentex Corporation. Instagram® is a registered trademark of Instagram, LLC. The Sirius®, XM®, and SiriusXM® names and all related marks and logos are trademarks of Sirius XM Radio Inc. All other trademarks are the property of their respective owners. Twitter® is a registered trademark of Twitter, Inc. Yakima® is a registered trademark of Yakima Products, Inc. This brochure is intended for general descriptive and informational purposes only. It is subject to change and does not constitute an offer, representation or warranty (express or implied) by Nissan North America, Inc. Interested parties should confirm the accuracy of any information in this brochure as it relates to a vehicle directly with Nissan North America, Inc., before relying on it to make a purchase decision. Nissan North America, Inc., reserves the right to make changes, at any time, without prior notice, in prices, colors, materials, equipment, specifications, and models and to discontinue models or equipment. Due to continuous product development and other pre- and post-production factors, actual vehicle, materials and specifications may vary from this brochure. Some vehicles shown with optional equipment. See the actual vehicle for complete accuracy. Availability and delivery times for particular models or equipment may vary. Specifications, options and accessories may differ in Hawaii, U.S. territories and other countries. For additional information on availability, options or accessories, see your Nissan dealer or contact Nissan North America, Inc. At [NissanUSA.com](https://www.nissanusa.com), you'll find virtual product demonstrations, a way to "build your own Nissan," a dealer locator, and more information about key Nissan support services. Or if you'd prefer, call 1-800-NISSAN-3 for answers to specific questions about ARIYA or any other Nissan vehicle. The Nissan names, logos, product names, feature names, and slogans are trademarks owned by or licensed to Nissan Motor Co. Ltd. and/or its North American subsidiaries. Other trademarks and trade names are those of their respective owners. Always wear your seat belt, and please drive responsibly. ©2022 Nissan North America, Inc. '23 ARIYA® 235860-N-10/22-100K-KSL 2023 PLATINUM+ e-4ORCE model shown. Expected availability early 2023!

## Electrify your life

Experience a new force of wonder. Boost your driving confidence with the smooth-yet-thrilling available e-4ORCE AWD electric power. Swipe the massive dual displays, touch the haptic feedback controls, or address ARIYA® with your voice. Take your hands off the wheel, your feet off the pedals, and let ARIYA assist you through stop-and-go freeway traffic with available ProPILOT Assist 2.0, or into your next parking space with available ProPILOT Park. This is what it's like to live electric.<sup>1, 2, 3, 4, 5</sup>





### Technology that plugs into your senses

Chances are, you've never experienced anything quite like ARIYA®. Instead of traditional buttons, you'll find dazzling illuminated controls that react with haptic feedback when pressed. The Integrated Display Interface features dual 12.3" widescreens that are breathtaking to see and simple to use. Communication is seamless, thanks to next-generation voice control. And with Intelligent Route Planner, directions to the nearest charging station are just a swipe away.<sup>3, 6, 7, 8</sup>

- Haptic Touch Controls
- Integrated Display Interface<sup>3</sup>
- Voice Control<sup>6, 8</sup>
- Firmware Over-the-Air Updates<sup>9</sup>
- Wireless Charging<sup>10, 11</sup>
- Wireless Apple CarPlay® Integration<sup>8</sup>



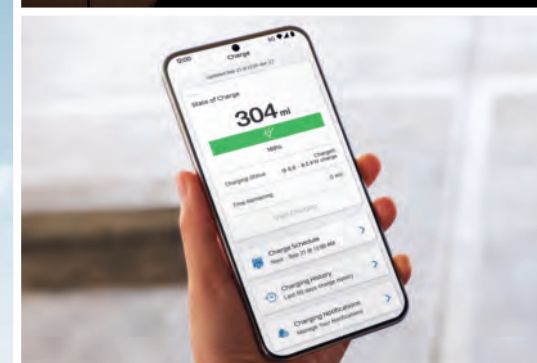
Drive, work, or park and relax — it's up to you

Once parked, ARIYA transforms into a mobile lounge — use the flat floor and open space to stretch out, get comfortable. Or create a mobile office — perch your laptop on the tray table,<sup>10</sup> place your sketch book on the power sliding center console,<sup>10</sup> and get productive.<sup>12</sup>



## Charge ahead with confidence

This electric crossover may be brand new, but ARIYA® is infused with Nissan's long history of know-how in EV development. The batteries powering ARIYA take proven technology even further — with advances like active thermal management, which optimizes performance for hot and cold climates, as well as fast charging.<sup>13</sup> You can choose between standard and long-range batteries and front-wheel drive or available e-4ORCE All-Wheel Drive.<sup>1, 2, 13</sup> Just charge up and go — the road is yours.



**Charge at home** With a dedicated wall charger, you can plug into the easy life and wave goodbye to the gas pump.<sup>13, 14</sup>

**Charge smart** Schedule your home charging from your compatible smartphone and choose times when electricity rates are lower. Which means you can set charging to start while you sleep, then wake up to an ARIYA 100% ready to go.<sup>8, 13, 15</sup>

**Charge on the go** An ever-expanding public charging network, including fast charge stations, lets you venture out there with confidence.<sup>13, 16</sup>

**Intelligent Route Planner** This digital tool can help make your journey seamless: sync the climate control system with your departure time, and calculate the route to your destination while locating fast chargers along the way. This is next-level road-tripping.<sup>6, 7, 8, 16</sup>

**SiriusXM with 360L** Transform your ride with the most extensive and personalized radio experience on the road. Advanced in-car technology makes finding your favorite SiriusXM channels, shows, and exclusive content easier than ever before.<sup>17</sup>

## All-wheel drive, evolved

ARIYA's available e-4ORCE dual-motor AWD powertrain offers more than just awe-inspiring thrust and thrills. It combines balanced, smooth motion with positive traction for elevated grip and uplifted confidence you can feel year-round.<sup>1,2</sup>

Movement is effortless. Power, seemingly limitless. Press the accelerator, and e-4ORCE responds astonishingly, propelling ARIYA® up to speed with remarkable force and poise. Need to get through a storm? e-4ORCE precisely meters out power to each of its wheels, individually, so you can navigate slippery roads with more confidence.<sup>1,2,6</sup>

**e-4ORCE**



**NISSAN**  
INTELLIGENT  
MOBILITY™

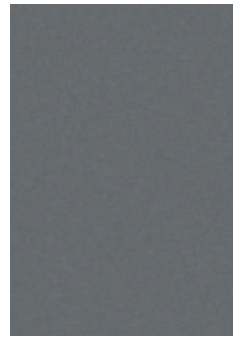


With available ProPILOT Assist 2.0, driving doesn't have to be so hands-on

**ProPILOT Assist 2.0** Feel the full power of ProPILOT Assist 2.0 as it helps out with freeway lane changes and can provide hands-off, foot-off driving assistance through stop-and-go freeway traffic.<sup>4</sup>

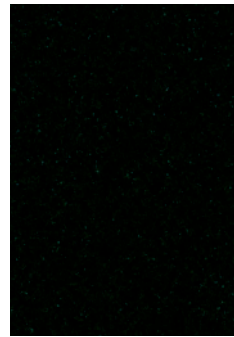
**ProPILOT Park** Tight parking spot? Push the ProPILOT Park button, and glide, hands-off, right into the spot – whether it's back-in or parallel.<sup>5</sup>

## CHOOSE YOUR COLOR & INTERIOR



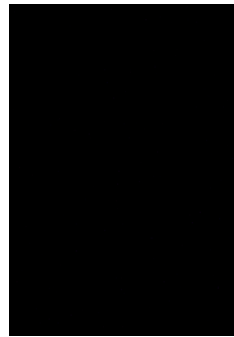
Gun Metallic

VEN ENG EVO EMP PLT



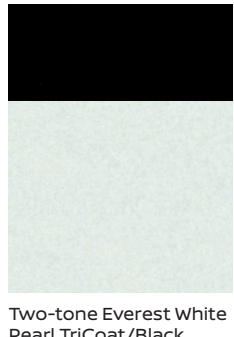
Northern Lights Metallic<sup>19</sup>

VEN ENG EVO EMP PLT



Black Diamond Pearl

VEN ENG EVO EMP PLT



Two-tone Everest White Pearl TriCoat/Black Diamond Pearl<sup>19</sup>

VEN ENG EVO EMP PLT



Two-tone Brilliant Silver Metallic/Black Diamond Pearl<sup>19</sup>

VEN ENG EVO EMP PLT

Charcoal Cloth	■				
Charcoal Leatherette		■	■	■	
Light Gray Leatherette			■	■	
Blue Gray Nappa Leather <sup>18</sup>					■

### ARIYA Trim Legend

VEN = VENTURE+  
ENG = ENGAGE  
EVO = EVOLVE+  
EMP = EMPOWER+  
PLT = PLATINUM+



Two-tone Boulder Gray Pearl/Black Diamond Pearl<sup>19</sup>

VEN ENG EVO EMP PLT



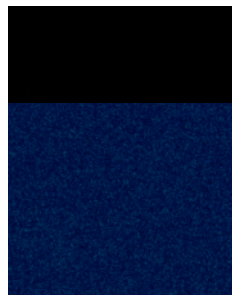
Two-tone Sunrise Copper Pearl/Black Diamond Pearl<sup>19</sup>

VEN ENG EVO EMP PLT



Two-tone Passion Red TriCoat/Black Diamond Pearl<sup>19</sup>

VEN ENG EVO EMP PLT



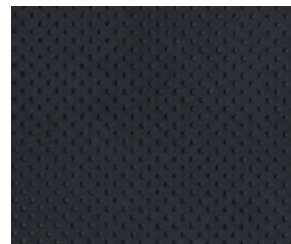
Two-tone Deep Ocean Blue Pearl/Black Diamond Pearl<sup>19</sup>

VEN ENG EVO EMP PLT

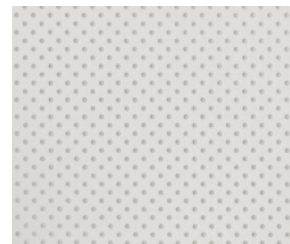
Charcoal Cloth	■				
Charcoal Leatherette		■	■	■	
Light Gray Leatherette			■	■	
Blue Gray Nappa Leather <sup>18</sup>					■



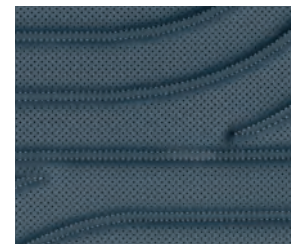
Charcoal Cloth  
VENTURE+



Charcoal Leatherette  
ENGAGE | EVOLVE+ | EMPOWER+



Light Gray Leatherette  
ENGAGE | EVOLVE+ | EMPOWER+



Blue Gray Nappa Leather<sup>18</sup>  
PLATINUM+

■ Standard

Nissan has taken care to ensure that the color swatches presented here are the closest possible representations of actual vehicle colors. Swatches may vary slightly due to the printing process and whether viewed in daylight, fluorescent or incandescent light. Please see the actual colors at your dealer.

## CHOOSE YOUR ACCESSORIES

### NISSAN ARIYA® ACCESSORIES

## Build the “you” edition

Every Genuine Nissan Accessory is custom-fit, custom-designed, and durability-tested. Each one is backed by Nissan’s 3-year/36,000-mile (whichever occurs first) limited warranty (if installed by dealer at the time of new vehicle purchase) and can be financed when installed by dealer at time of new vehicle purchase.<sup>20</sup> Affiliated Yakima® accessories are not warranted by Nissan. Refer to product manufacturer for warranty details. Nissan Limited Warranty does not cover damages or failures to the vehicle caused by improper installation or alterations of any Nissan-approved accessory or component. Contact your dealer for details.<sup>21</sup>

#### A. Virtual Key<sup>22</sup>

Use your compatible smartphone or Apple Watch® to lock/unlock and start your ARIYA. You can even share this access with up to 7 others.

#### B. Dual Camera Drive Recorder<sup>23,24</sup>

Catch what’s happening outside and inside your ARIYA.

#### C. Retractable Pet Divider

Give your 4-legged friends their own space, and help keep them secure.

#### D. All-Season Floor Mats — High Wall Liners (3-piece set)

Protect the interior from rain, snow, and mud.

#### E. Trash Bin<sup>24</sup>

Spruce up your space with this handy, removable trash bin.

#### F. Illuminated Kick Plates and Interior Accent Lighting (sold separately)

Enliven your atmosphere with a glowing reception.

#### Additional Accessories:

- Door Pocket Lighting
- Illuminated Scuff Plate
- Front Console Storage Bin
- Clear Hood and Charging Port Protector Set
- LED Fog Lights and More

For more information and to shop online for ARIYA® Genuine Nissan Accessories, go to [bit.ly/23Ariya-Accys](https://bit.ly/23Ariya-Accys)



Nissan ARIYA® PLATINUM+ e-4ORCE<sup>1</sup> shown in Two-tone Everest White Pearl TriCoat/Black Diamond Pearl with 19" Gloss Black Aluminum-alloy Wheels, 19" Satin Chrome Wheel Insert Kit, Load Carriers — Crossbars,<sup>25</sup> Affiliated: Yakima® LoadWarrior — Cargo Basket,<sup>21,25</sup> Side-Window Deflectors, Clear Rear Bumper Protector, Exterior Ground Lighting w/ Logo and Rear Illumination, Tow Hitch Receiver Kit, Class I,<sup>26</sup> Trailer Tow Harness (4-pin),<sup>26</sup> Affiliated: Yakima® RidgeBack 4 — Hitch Mount Bike Rack,<sup>21,25</sup> Affiliated: Yakima® HitchSki — Hitch Mount Ski Adapter,<sup>21,25</sup> and Splash Guards.

CHOOSE YOUR TRIM

# Choose the ARIYA<sup>®</sup> that fits your world

Whether you crave driving excitement, adventure-worthy capability, impressive range, or something in between, there's an ARIYA for you.<sup>15, 27</sup>



	VENTURE+	ENGAGE	ENGAGE e-4ORCE	ENGAGE+ e-4ORCE	EVOLVE+	EVOLVE+ e-4ORCE	EMPOWER+	PLATINUM+ e-4ORCE
Mile Range <sup>15, 27</sup>	Up to 304 miles <sup>15</sup>	Up to 216 miles <sup>15</sup>	Up to 205 miles <sup>27</sup>	Up to 270 miles <sup>27</sup>	Up to 289 miles <sup>15</sup>	Up to 270 miles <sup>27</sup>	Up to 289 miles <sup>15</sup>	Up to 265 miles <sup>27</sup>
Drivetrain	FWD	FWD	AWD	AWD	FWD	AWD	FWD	AWD
Battery	87 kWh	63 kWh	63 kWh	87 kWh	87 kWh	87 kWh	87 kWh	87 kWh
Motor(s)	178 kW	160 kW	250 kW	290 kW	178 kW	290 kW	178 kW	290 kW
HP   Torque	238   221 lb-ft	214   221 lb-ft	335   413 lb-ft	389   442 lb-ft	238   221 lb-ft	389   442 lb-ft	238   221 lb-ft	389   442 lb-ft
0-60 MPH (est.) <sup>28</sup>	7.2 seconds	7.1 seconds	5.1 seconds	4.8 seconds	7.2 seconds	4.8 seconds	7.2 seconds	4.8 seconds
Charge Time (est.) <sup>13</sup>	40 min (80%)	35 min (80%)	35 min (80%)	40 min (80%)	40 min (80%)	40 min (80%)	40 min (80%)	40 min (80%)
Trim Highlights	<b>VENTURE+</b> is our longest range model.	<b>ENGAGE</b> models offer different batteries, ranges, and choice of Front-Wheel Drive or e-4ORCE All-Wheel Drive. <sup>1, 2</sup>			The <b>EVOLVE+</b> models offer a choice of Front-Wheel Drive and e-4ORCE All-Wheel Drive. <sup>1, 2</sup>		The <b>EMPOWER+</b> is Front-Wheel Drive.	The <b>PLATINUM+</b> is the ARIYA flagship. It is e-4ORCE All-Wheel Drive. <sup>1, 2</sup>
Key Features	Key features include: <ul style="list-style-type: none"> <li>• ProPILOT Assist with Navi-link<sup>29</sup></li> <li>• Standard Safety Shield<sup>®</sup> 360<sup>30</sup></li> <li>• ANDON interior lighting</li> <li>• Wireless Apple CarPlay<sup>®</sup> integration<sup>8</sup></li> <li>• Android Auto<sup>™</sup> compatibility<sup>8</sup></li> <li>• Dual 12.3" displays<sup>3</sup></li> </ul>	All three <b>ENGAGE</b> models include <b>VENTURE+</b> equipment, plus: <ul style="list-style-type: none"> <li>• Head-Up Display<sup>31</sup></li> <li>• 8-way power driver's seat</li> <li>• Memory system — driver's seat</li> <li>• Power-sliding center console<sup>12</sup></li> <li>• Leatherette-appointed seats</li> <li>• Heated front and rear outboard seats</li> <li>• Heated steering wheel</li> </ul>			Both <b>EVOLVE+</b> models include <b>ENGAGE</b> equipment, plus: <ul style="list-style-type: none"> <li>• Intelligent Around View<sup>®</sup> Monitor<sup>32</sup></li> <li>• Intelligent Rear View Mirror<sup>33</sup></li> <li>• LED fog lights</li> <li>• Panoramic Moonroof</li> <li>• Power liftgate</li> <li>• Wireless charger<sup>11</sup></li> <li>• Power center storage with tray table<sup>12</sup></li> </ul>		Includes <b>EVOLVE+</b> equipment, plus: <ul style="list-style-type: none"> <li>• ProPILOT Assist 2.0<sup>4</sup></li> <li>• ProPILOT Park<sup>5</sup></li> <li>• Multi-color contextual line illumination</li> </ul>	Includes <b>EVOLVE+</b> equipment, plus: <ul style="list-style-type: none"> <li>• ProPILOT Assist 2.0<sup>4</sup></li> <li>• ProPILOT Park<sup>5</sup></li> <li>• Multi-color contextual line illumination</li> <li>• Motion Activated Liftgate</li> <li>• Climate-controlled front seats</li> <li>• Bose Premium Audio System</li> </ul>

